

Care of the reel

The Holliday is a fine precision mechanism. A little attention in keeping it clean and properly lubricated will be repaid by years of dependable service.

Bearings in the Holliday, the axle and gear shank as well as the pinion bearing should require cleaning and oiling only once a year with normal use.

NOTE: After using in brackish or salt water, wash the reel in fresh water immediately; then oil all exposed moving parts. Materials and finish have been chosen to make this reel as corrosion resistant as possible and still retain the lightness and strength required in this type reel. Repair parts are available at leading sporting goods and tackle stores. If you cannot find a dealer handling the parts, they may be purchased directly from the home office. It is recommended that, whenever possible, reels needing repairs or general overhauling should be returned to the home office at E. TAUNTON, MASS.

NOTE: Please remove fishing line before returning reel.

two reels in one

By removing the spool and rotating head the angler can easily and quickly convert the reel from a conventional size to a heavy-duty fresh water or a light salt water reel. By having two spare parts you have TWO REELS IN ONE. (No tools required)

No. 310 — Consists of spool and rotating head to convert the Model 30 reel to large capacity model 40 \$15.00

No. 410 — Consists of spool and flyer to convert the Model 40 reel to the smaller capacity Model 30 \$10.00

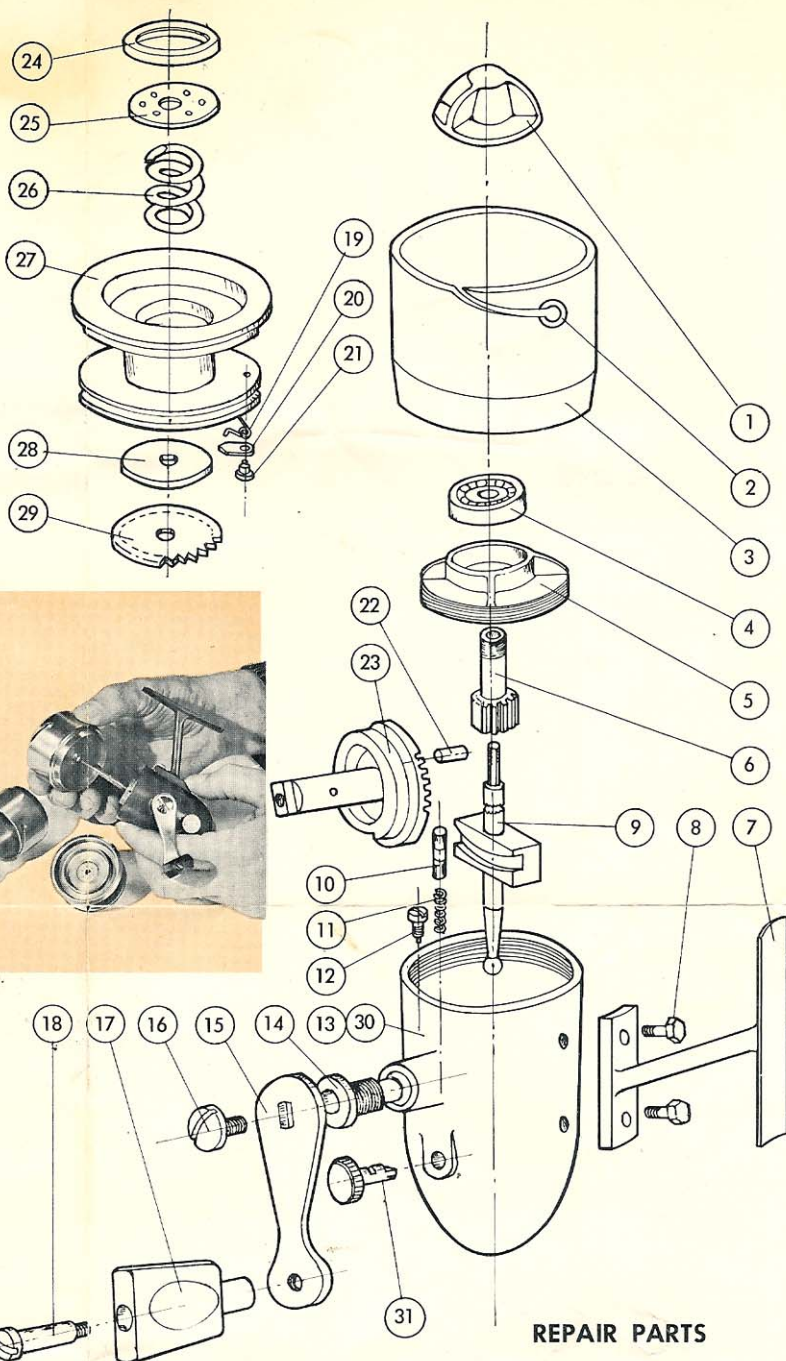


pick up "gap" adjustment

If your reel should fail to pick up properly, or if it should bind when using exceedingly heavy line, it may become necessary to adjust the gap between the spool flange and the flyer. To do this remove the spool and turn the anti-reverse knob to "OFF." Then insert a small screwdriver, nail, or any such pointed metal object into the small hole in the flyer as shown. Turn the flyer to the right, if the reel is binding or to the left if the MAGIC FLYER is failing to pick up the line.

OILING INSTRUCTIONS

Remove the crank screw marked OIL and, using a tube of reel or gun grease, squeeze a generous amount into the hollow crank shaft. This will lubricate the gears, cam, cam pin, etc. Externally, a few drops of machine oil should be applied to the anti-reverse knob and crank knob every few days when using the reel continuously. The spool should also be removed occasionally and the shaft and friction washers oiled. Be sure that a few drops of oil reach the shaft behind the friction plate.



REPAIR PARTS

Part No.	Part Name	Part No.	Part Name	Part No.	Part Name
1	Drag knob	18	Knob screw	28	Friction washer
2	Line guide	19	Drag click spring	29	Friction plate
3	Rotating head with Carboloy line guide (for Model 30 reel)	20	Drag click pawl	30	See 13
4	Ball bearing	21	Drag click screw	31	Anti-reverse knob
5	Bearing retainer	22	Cam pin	32	Extra spool complete (for Model 30 reel)
6	Pinion	23	Gear	34	Chenille for spool
7	Stand	24	Drag ring	42	Spool complete (for Model 40 reel)
8	Stand screws	25	Drag plate	43	Rotating head (for Model 40 reel)
9	Axle shaft	26	Drag spring for No. 30		
10	Anti-reverse plunger	26A	Drag spring for No. 40		
11	Anti-reverse spring	27	Spool body		
12	Anti-reverse screw				
13 & 30	Body & bushing				
14	Crank bushing				
15	Crank				
16	Crank screw				
17	Crank knob				

Reels being returned for repair or service should be shipped prepaid to:

Holliday Reel Co.

E. Taunton, Mass.